

Duct fans ICM EC



High efficiency
motor



IP 44 protection
class



Easy installation



Controller
0-10 V

Design

Duct fan, diagonal. Its unique design and the use of the most modern electronically commutated (EC motor) allows it to achieve high operating parameters with relatively low noise and very low energy consumption. The fan cover is made of polypropylene, while the rotor is made of ABS plastic. Special connectors make it easy to install, remove and maintain the appliance. The device can be installed both horizontally and vertically.

Usage

The ICM-EC fan is designed to transport clean air. It is ideal for the installation of air-supply and exhaust in residential buildings, public utility buildings, offices, shops. The device can also be used for the installation of fume hoods from kitchen hoods that require the use of grease filters.

Electric motor

High efficiency electronically commutated direct current motor (EC). Power supply 230V ~1, 50Hz. The engines are designed for smooth full range speed regulation while maintaining high efficiency. The speed control is realized by means of a controller using an analogue signal 0-10V. Protection class IP44.

Operating temperature

The fan is designed to transmit air with a temperature not exceeding 60°C.



Dynamically balanced
diagonal rotor



Sealed connection box located
on the cover



Special profiled guides located
behind the rotor ensure higher
efficiency



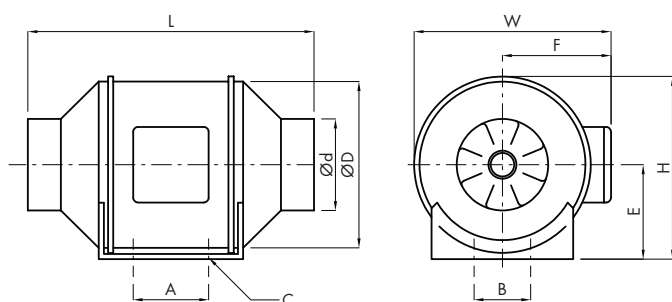
Stable mounting base
for the fan

Technical specifications

Model	Air flow [m³/h]	Impeller speed [rpm]	Power [W]	Current [A]	Voltage [V]	Frequency [Hz]	Sound pressure level [dB(A)]	Weight [kg]	Controller HMTP	Controller RS-EC
ICM-EC-100/366M	366	3800	70	0,47	230	50	35	1,8	Yes	Yes
ICM-EC-125/561M	561	3800	70	0,47	230	50	35	2	Yes	Yes
ICM-EC-150-160/647M	647	3000	70	0,47	230	50	43	2,7	Yes	Yes
ICM-EC-200/1250M	1250	3000	180	1,05	230	50	50	4,9	Yes	Yes
ICM-EC-250/1652M	1652	3000	255	1,5	230	50	65	7,9	Yes	Yes
ICM-EC-315/2206M	2206	2350	250	1,4	230	50	68	11,3	Yes	Yes

Sound pressure level measured at 3m.

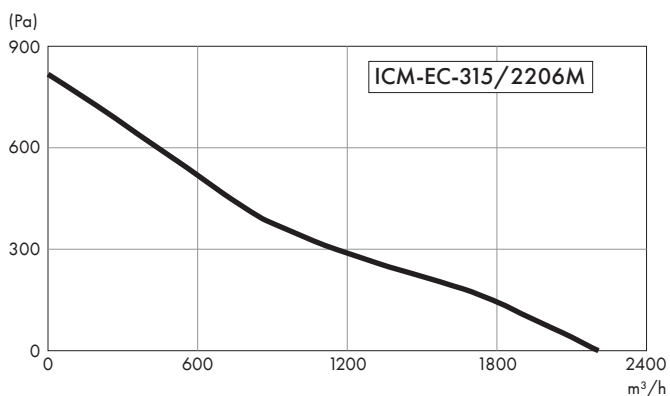
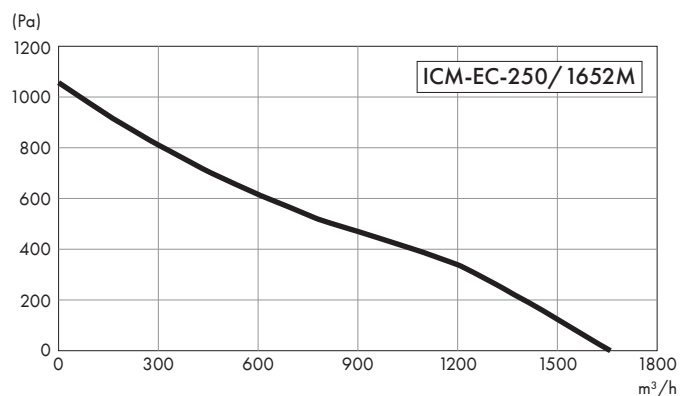
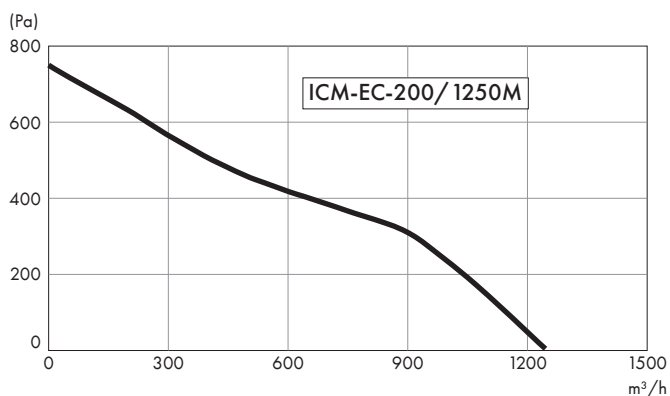
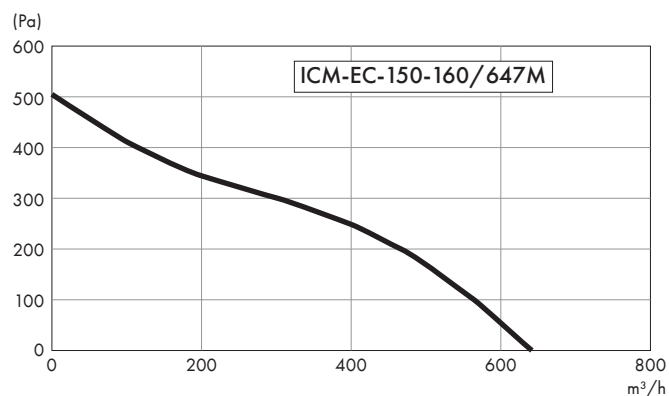
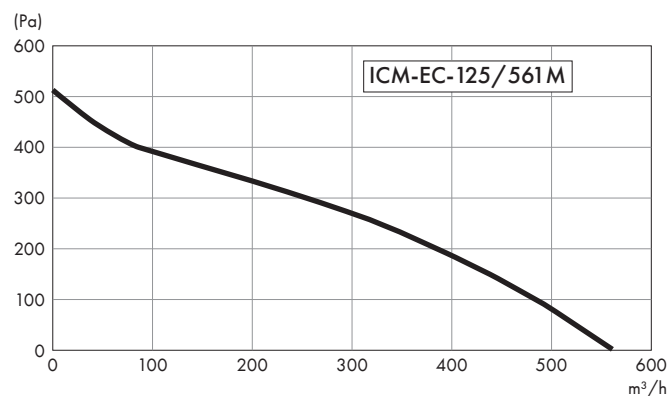
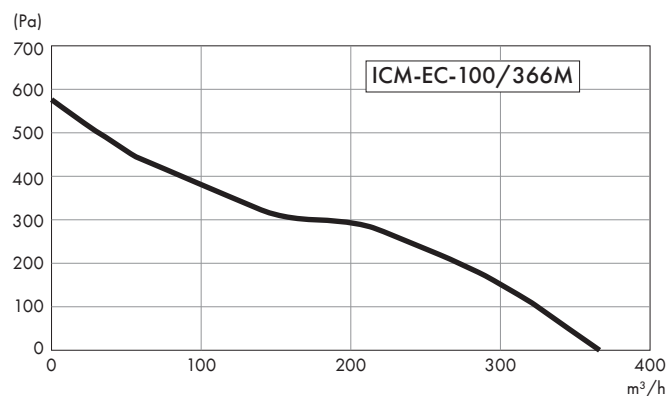
Technical drawing



Dimensions [mm]

Model	A	B	ØC	Ød	E	F	ØD	L	W	H
ICM-EC-100/366M	80	60	4 - 4,5	97	99	116	163	302	204	195
ICM-EC-125/561M	80	60	4 - 4,5	123	99	116	163	257	204	195
ICM-EC-150-160/647M	80	60	4 - 5,0	147	109	127	187	313	227	208
ICM-EC-200/1250M	100	94	4 - 5,5	197	125	137	205	302	249	237
ICM-EC-250/1652M	150	150	4 - 8 * 11	247	150	174	261	383	310	286
ICM-EC-315/2206M	181	178	4 - 8 * 11	312	187	216	325	446	386	357

Characteristics



Accessories



HMTP

Potentiometer for EC motors
page 175



RS-EC

Speed controller for EC motors
page 175



FKOV

Filter G3 for round ducts
page 83



WSH

Service switch
page 177



AKUFLEX

Flexible acoustic silencer
page 71



PCC

Fastening clamp
page 81



RSKV

Backdraft damper
page 41



PSH

Pressure switch
page 173